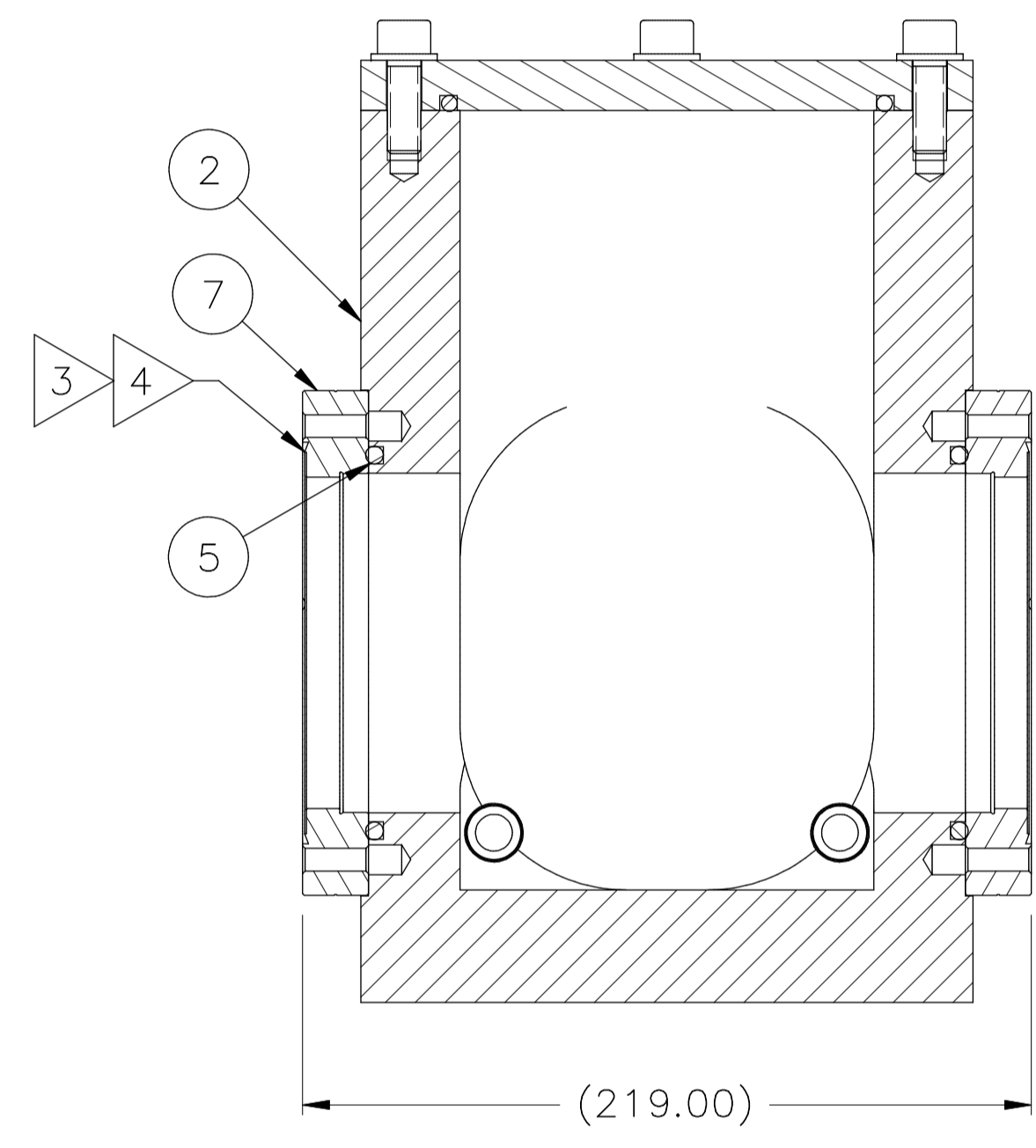
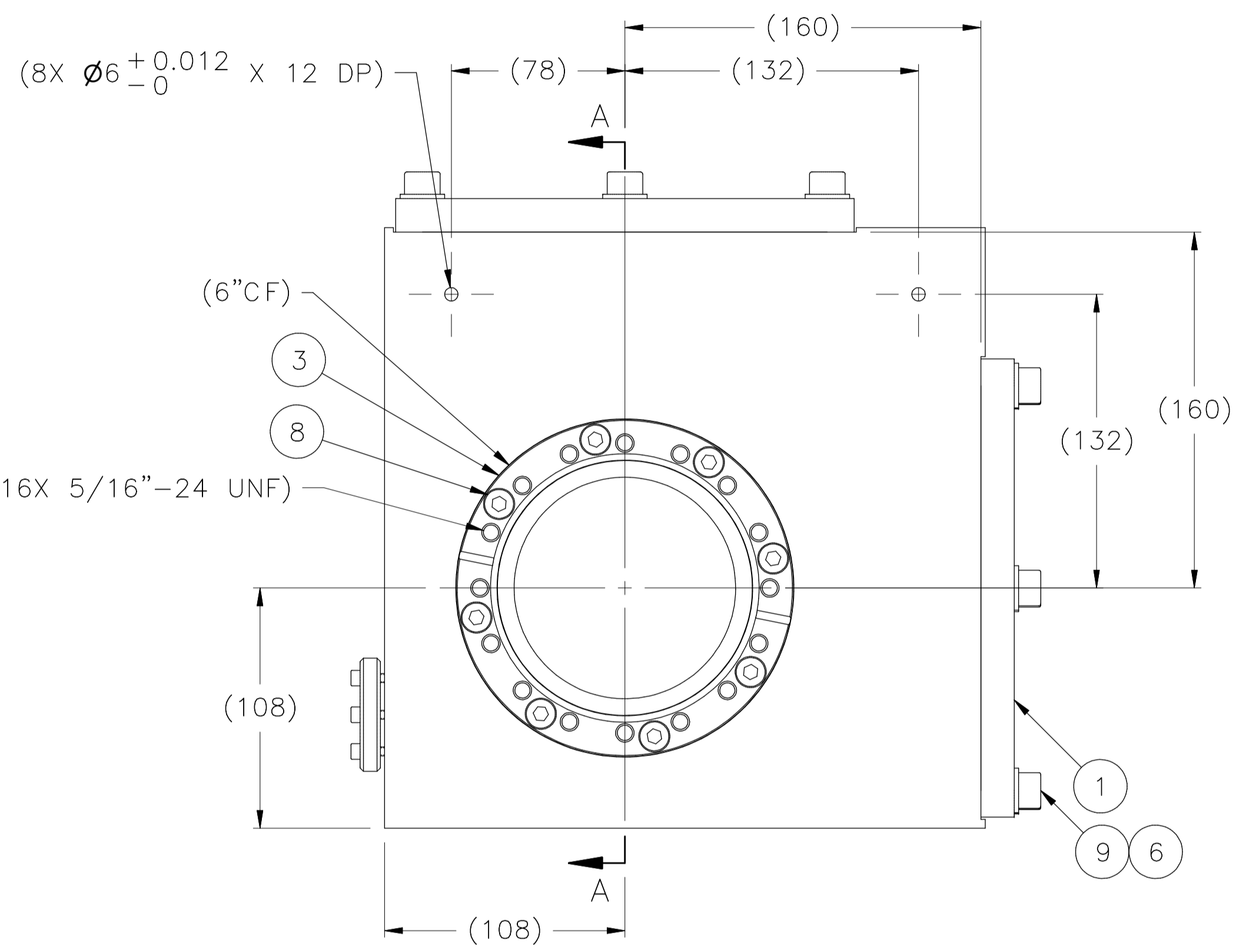
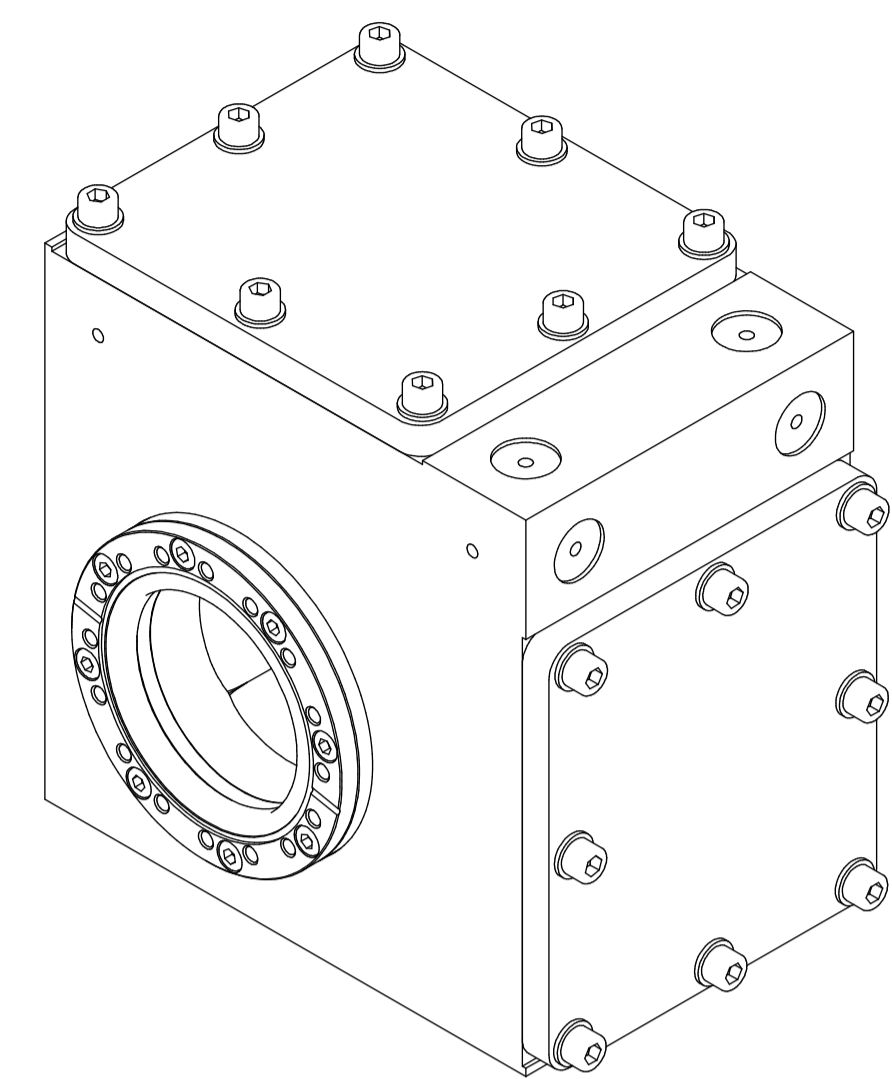
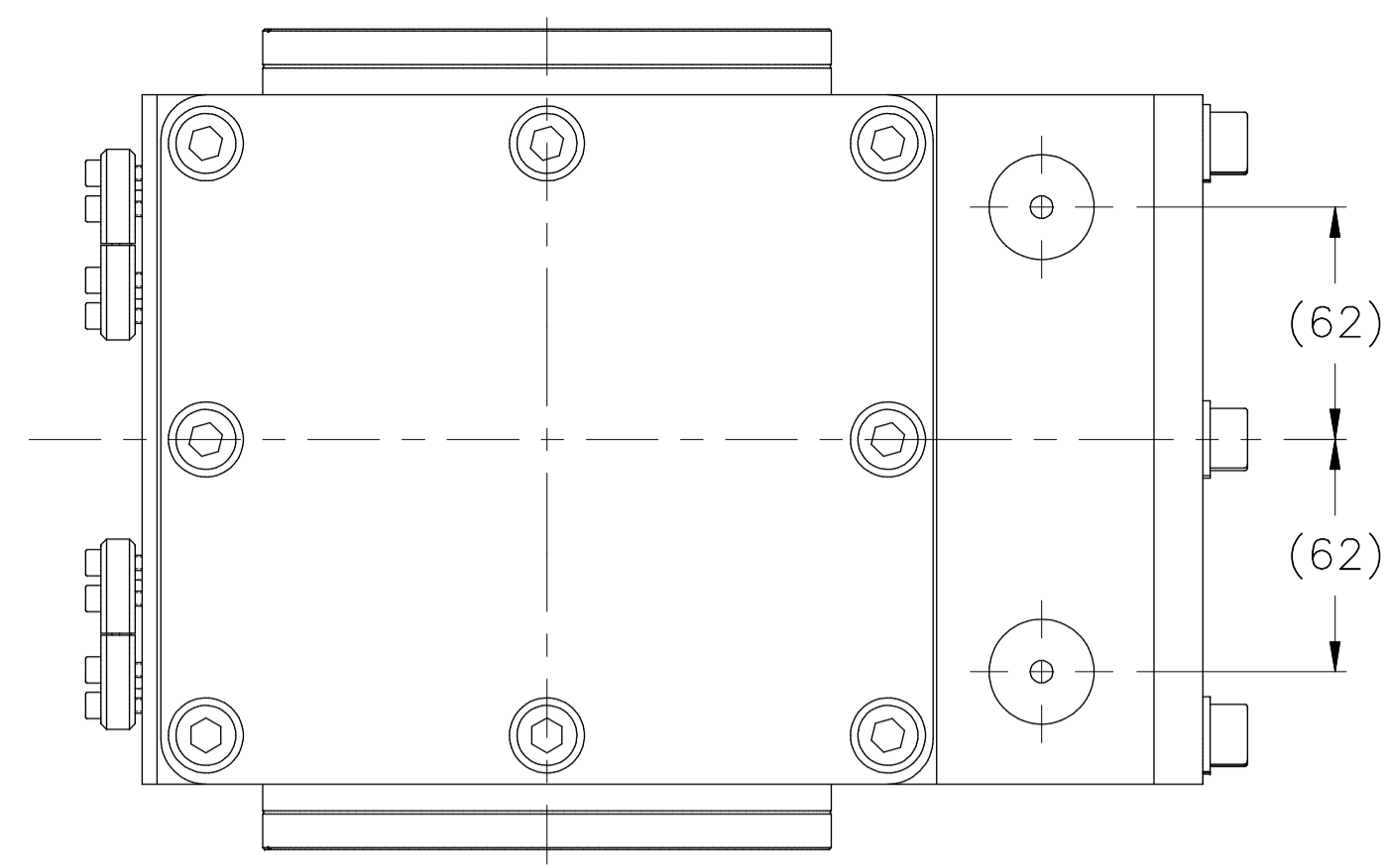
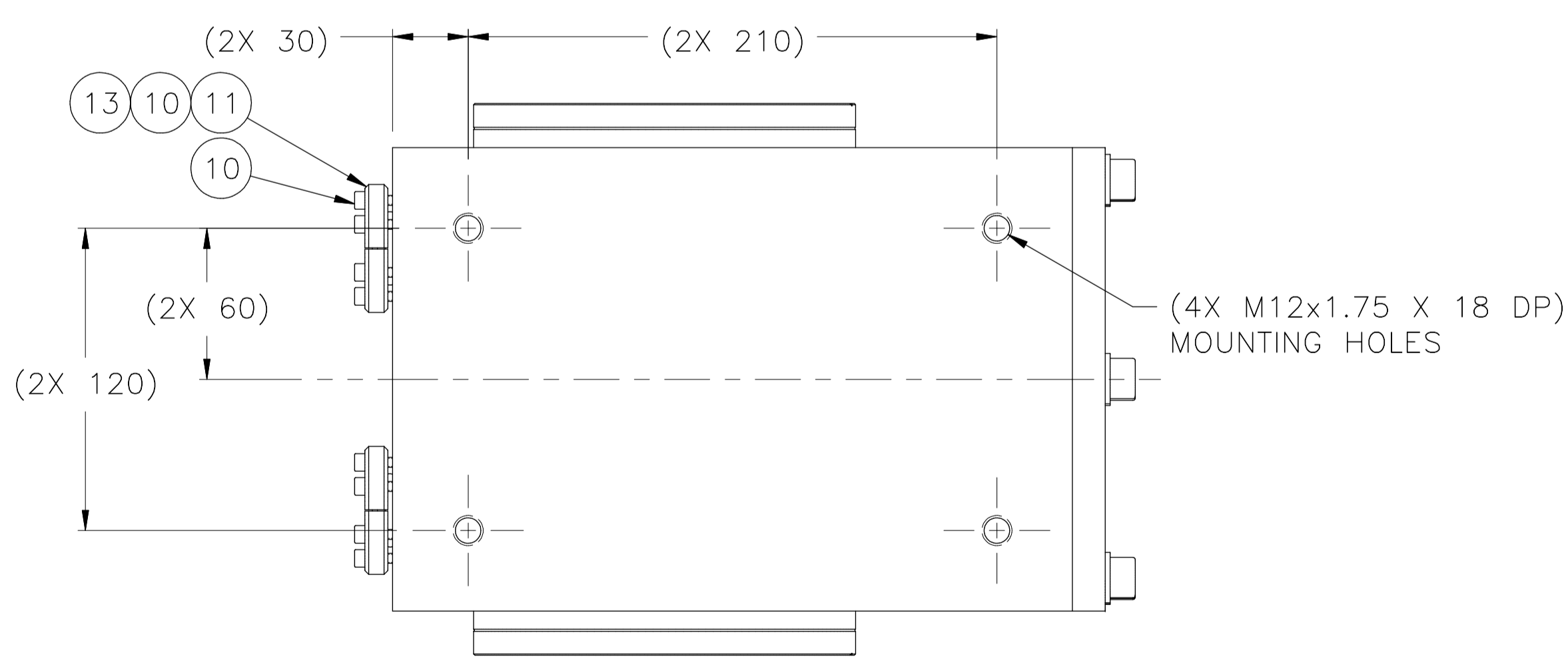
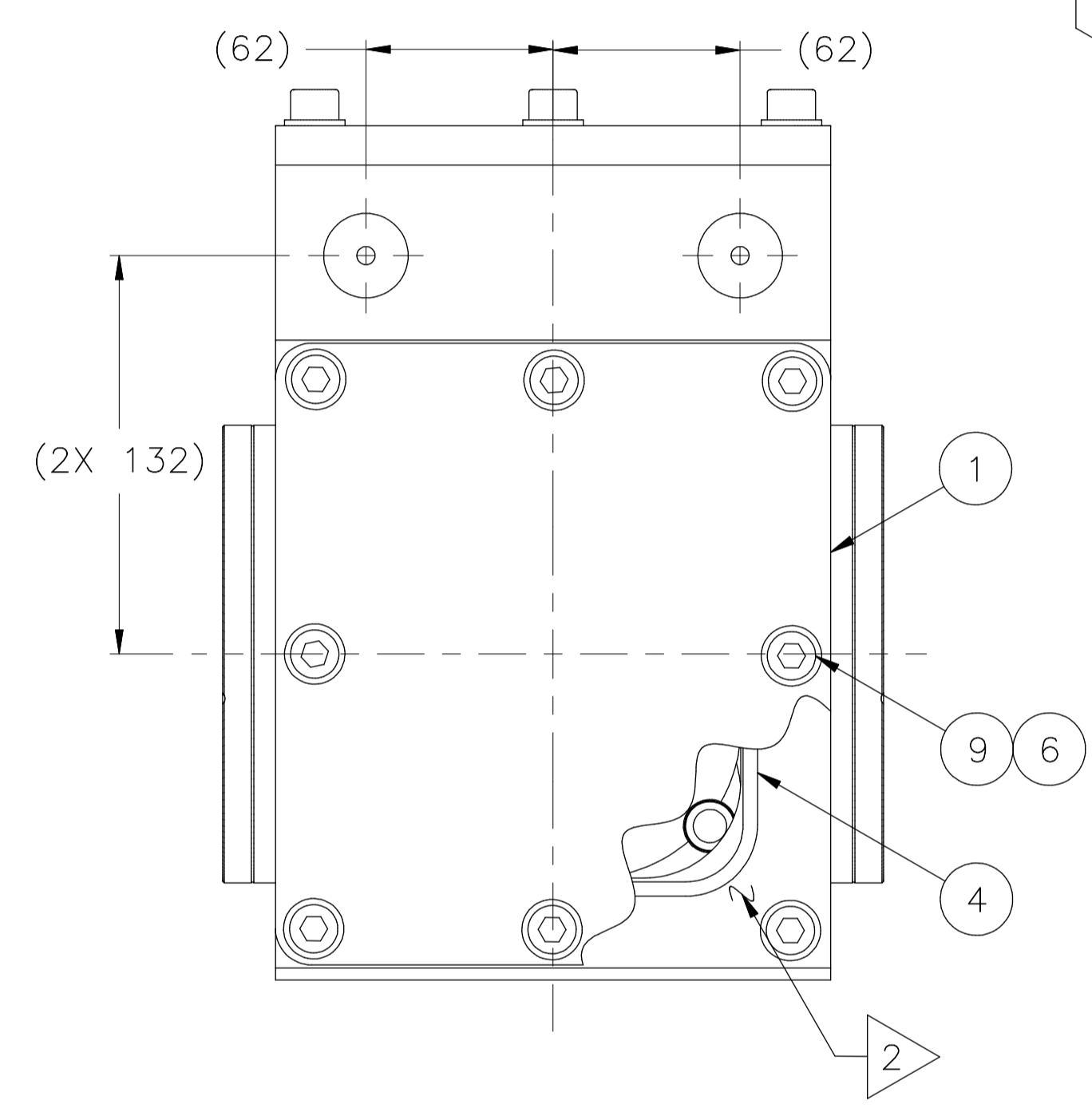


CONFIDENTIALITY  
 THE CONTENTS OF THIS DRAWING INCLUDE CONFIDENTIAL INFORMATION WHICH IS THE SOLE PROPERTY OF D-PACE. ANY USE, DISCLOSURE OR REPRODUCTION OF THIS DRAWING, IN WHOLE OR IN PART, WITHOUT THE PRIOR WRITTEN AUTHORIZATION OF D-PACE IS STRICTLY PROHIBITED.

REVISION HISTORY					
REV	DESCRIPTION	DCN	BY	DATE	APPROVED
A	INITIAL RELEASE - DERIVED FROM DWG 1800525			27/04/2016	D.POTKINS



SECTION A-A



NOTES:

- CLEAN, HANDLE, PACKAGE & STORE COMPONENT IN ACCORDANCE WITH D-PACE SPECIFICATION 2020003.
- PROTECT FLANGE SEALING SURFACE FROM DAMAGE. NO NICKS, SCRATCHES OR DENTS ON KNIFE EDGE.
- LEAK CHECK ALL WELD JOINTS & SEAL JOINTS, ANY LEAKS IN EXCESS OF  $5 \times 10^{-9}$  ATM CC/SEC. MUST BE REPAIRED AND RE-TESTED.
- COVER OPEN PORTS ON VACUUM BOX WITH ITEM 7 TO PROTECT ASSEMBLY FROM CONTAMINATION DURING TRANSIT.

ITEM	QTY	PART NUMBER	DESCRIPTION
13	2	QF16-075-ARB	CENTERING RING, KF (QF) 16, AL, BUNA-N, KJL
12	2	QF16-075-AB	BLANK FLANGE KF (QF) 16, AL, KJL
11	2	QF16-075-BC	BULK HEAD CLAMP KF (QF) 16, AL, KJL
10	12		SCREW, SHC, M4 X 20 LG, SS
9	16		SCREW, SHC, M10 X 30 LG, SS
8	16		SCREW, SHC, M8 X 25 LG, SS
7	A/R		GLASS PROTECTION TAPE, ULINE
6	16		WASHER, FLAT, M10, SS
5	2		O-RING, #-347, VITON
4	2		O-RING, #-362, VITON
3	2	1901675	FLANGE, O-RING DIRECT MOUNT, 6 CF"
2	1	1901674	V-BOX, DUAL ES-4, CF 6" & O-RING
1	2	1901439	FLANGE, BLANK, ES-4

DO NOT SCALE FROM DRAWING		APPROVALS		DATE	 <b>DEHNEL - PARTICLE ACCELERATOR COMPONENTS &amp; ENGINEERING, INC.</b> P.O. BOX 201, NELSON BC, CANADA, V1L 5P9 TEL: (250) 352-5162 www.d-pace.com
ALL DIMENSIONS IN MILLIMETRES		DRAWN	25/04/2016		
TOLERANCES UNLESS OTHERWISE SPECIFIED		CHECKED	27/04/2016		
LINEAR		DESIGNED	2016		
X	±1	D-PACE			
X.X	±0.3	MODELED	25/04/2016		
X.XX	±0.1	J.THEROUX			
X.XXX	±0.03				
ANGULAR	±0.5°				
SURFACE FINISH	1.6√				
THIRD ANGLE PROJECTION			ES-4		
		NEXT ASSY	SYSTEM	SCALE 1:2	WEIGHT 22.97 kg SHEET 1 OF 1

TITLE  
**V-BOX, DUAL ES-4, CF 6" & ORING**

SIZE DRAWING NO. REV  
**A1 1800636 A**